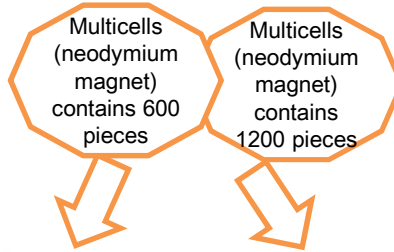


Overwhelming distance reaching power

Precise & targeted transmission, never lose to the background noise of the streets.

- FB-6001-LB (One side sealed)
- FB-6001-LW (Both sides open)

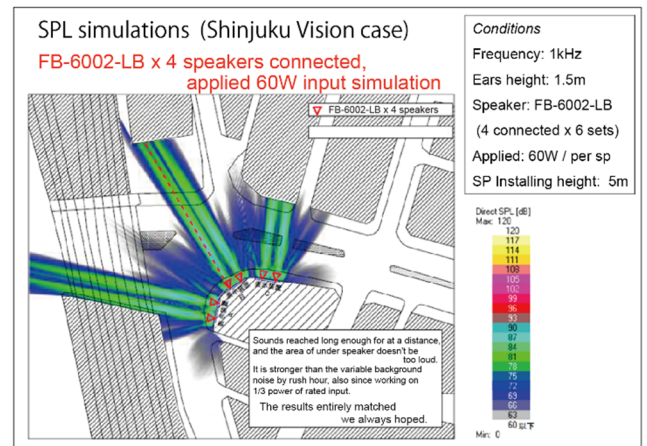


- FB-6002-LB (One side sealed)
- FB-6002-LW (Both sides open)



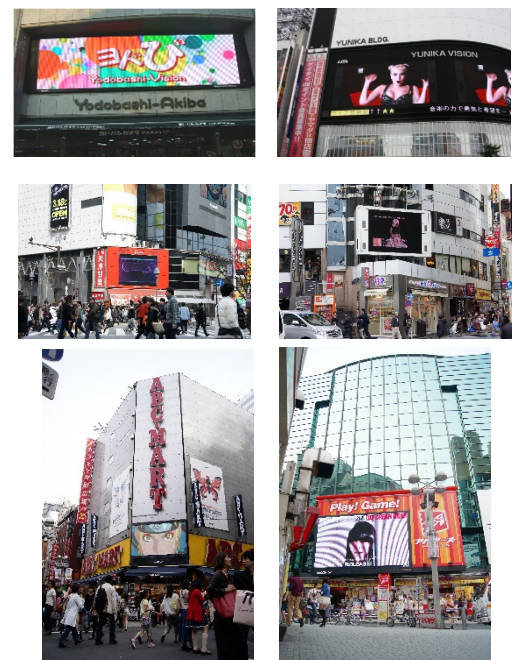
Features

- Using the biggest flat speaker unit FPS2030 transducer
 - Precise & targeted transmission
 - High intelligibility
 - Minimal signal feedback
 - Superior volume level with consistency over distance
 - It makes available to reduce the quantity of installing speakers.
 - Reduce the reverberation that the cause of difficulties to hear.
 - It is stronger than the background noise of the streets.
 - Outdoor use ready
 - Slimness no other
 - High reliability of the proven experience and track record
- These speakers installed a lot of digital signage advertising in Tokyo, Osaka, and in JR(Japan Railway) stations platform for an announcement.



| Model No. | FB-6001-LB | FB-6001-LW | FB-6002-LB | FB-6002-LW |
|-----------------------------|---|-------------------------------|--|-------------------------------|
| Radiation Type | 1 (front) side radiation | 2 (front&back) side radiation | 1 (front) side radiation | 2 (front&back) side radiation |
| Speaker unit | FPS2030M3P1R Transducer x 1pcs | | FPS2030M3P1R Transducer x 2pcs | |
| Impedance | 8Ω | | 4Ω | |
| Input | 125W (Max.250W) | | 250W (Max.500W) | |
| SPL | 89dB/W/m | | 91dB/W/m | |
| Frequency | 250Hz - 10kHz (-10dB) | | 250Hz - 10kHz (-10dB) | |
| Directional characteristics | Vert.70degree, Hor.50degree (2kHz - 6dB) | | Vert.70degree, Hor.20degree (2kHz - 6dB) | |
| Input connector | Cable straight out (4-pin cable) Pin assign: Red(+), White(-) | | | |
| Cabinet | SPCC (Cold rolled steel sheet) | | | |
| Hanging point | M10 x 30 - Stud bolt x 4pcs | | | |
| Dimensions | W500 x H330 x D90 mm | | W851 x H330 x D90 mm | |
| Weight | App.10.5kg | | App.14.5kg | |
| Color | Black | | | |
| Price | Open (Note: The price different between 1side/2side radiation types. You can choose high impedance type by optional.) | | | |

Installing continues to grow in the metropolitan area

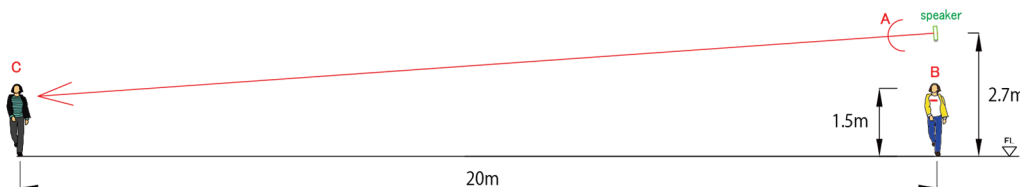


【FPS Flat speaker】 Directional characteristics



Advantage ① By using front & back, both side directivity type of speaker makes possible to reduce the installation costs and maintenance working hours since that the sound coverage area of the per speaker is possible to ensure 40-50m.

- © 20m destination actual SPL will be much more than the calculation value, because added the sound pressure of another installed speaker in 20m away and the reflection of the floor.
- © At the front of the speakers straight on the line "A" =107db, but the under of the speakers point "B" =83db, this differences caused because of the plane wave characteristics. When you are installing the plane wave speaker, we recommend to make a little bit angle toward down, then it available to hear from at under of the speaker to 20m equally sound pressure. (81-83dB)



■ Installing condition
 Speaker FB-6001-HB
 Height 2.7m from the ground
 Applied 60W

■ Calculated value of the each points SPL
 ◆ point A **107dB**
 (at 1m distance point on the line from a front of the speaker)
 ◆ point B **83dB**
 (under of the speaker : from a floor 1.5m)
 ◆ point C **81dB**
 (on the speaker axis 20m away)
 (25m away: 80dB)

Note:
 *This calculation based on from the basic specifications of the speaker.
 It does not include the reverberations, etc..

【Station platforms case】 Sound pressure distribution chart

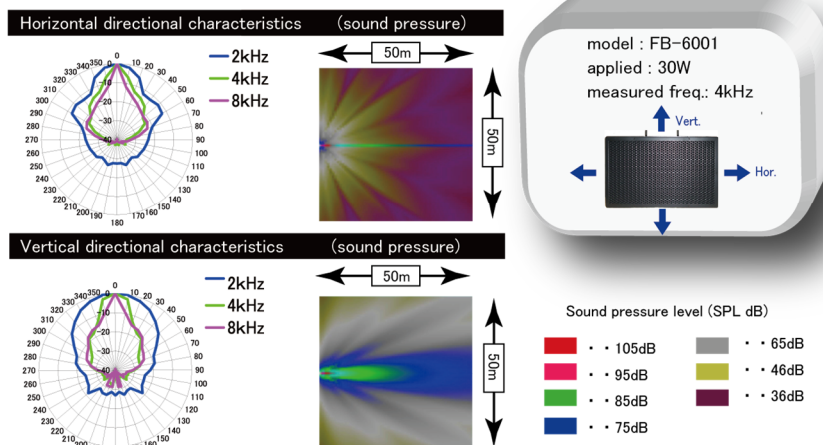
Targetted area transmission by planar waves long & strong directivities

Advantage ② It will be effective countermeasures against the noise problem for neighborhoods.

Station announcement at each platform will be clearer than current speaker.
 Flat panel speaker has an advantage in weather resistance that is helps reducing running costs.
 Flat panel speaker designed for eco-friendly that 98% of parts may be recyclable.

○ 1 side type → FB-6001-LB ○ 2 side type ↔ FB-6001-HW

【FB series】 Directional characteristics polar



A guide to the installation interval distance between two speakers:

- Middle Size (FB series): 30m to 50m
- Small Size (FP series): 20m to 30m

Please adjust to your environment and architecture of platforms when install.

Inquiry

Manufacturer and seller:

FPS INC.

Post code:135-0051
 Edagawa 2-16-5, Koto-Ku, Tokyo, Japan
 Tel: +81-3-5665-6951
 URL: www.fpsinc.co.jp
www.fps.tokyo